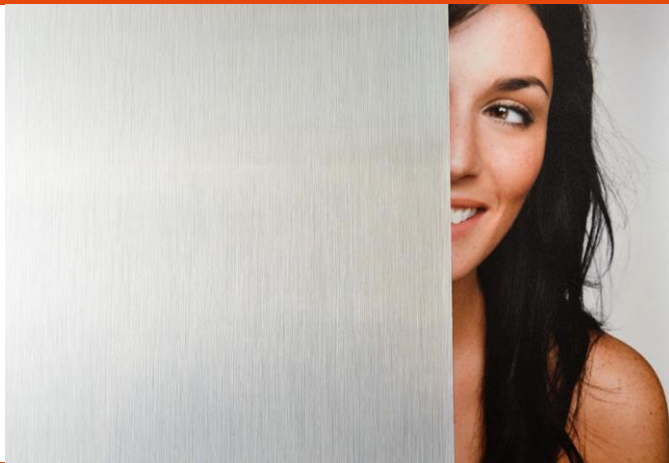


## SOLYX® Glass Finishes SXS-M300 Brushed Metal



### Product Description

**SOLYX® SXS-M300 Brushed Metal** is a laser-cut, metalized polyester film with a brushed silver surface. This film is excellent for privacy as well as heat and UV rejection.

#### Specifications

Product Code	SXS-M300
Product Family	Organic
Film Type	Polyester
Adhesive Type	Pressure-Sensitive
Usage	Interior
Available Width(s)	54"
Full Roll Length	100 linear feet (30.5m)
Thickness	6 mil
Shading Coefficient	0.24
Visible Light Transmission	0%
UV Rejection	100%
Total Solar Reflectance	75%
Total Solar Absorbance	38%
Glare Reduction	98%
Total Solar Energy Rejected	82%

### Product Construction

#### Face Film

2 mil Polyester

#### Adhesive

Clear, Pressure-Sensitive

#### Release Liner

Silicone Coated

### Product Details

**SOLYX® SXS-M300 Brushed Metal** is a laser-cut, metalized polyester film with a brushed metal surface made to simulate brushed aluminum or stainless steel. Supplied with a clear silicone coated release liner which protects the clear, pressure-sensitive adhesive, it is designed for application to interior glass, single- or double-pane. This film is ideal for privacy, decorative, solar control, or architectural applications.

#### Flammability Rating

This product meets ASTM E84 and is classified as Class A as defined in NFPA 101, Life Safety Code®.

#### LEED Credit EQ 4.1 Low Emitting Materials, Adhesives & Sealants

This product has zero VOC content according to 40 CFR 59, Subpart D (EPA method 24).

### Installation and Warranty

#### Installation

Installation should be in accordance with the manufacturer's installation instructions. This film is applied using the same tools and techniques used for installing window tinting films.

#### Warranty

This **SOLYX®** product will be free from defects in material and manufacture for a period of five (5) years from the date of installation. See warranty information for specific details.

### Product Distribution and Contact Information

#### Distribution

**SOLYX®** Decorative Films are available through authorized Installing Dealers, Distributors, or directly from Decorative Films, LLC.

Samples submitted upon request.

#### Contact Information

Decorative Films, LLC

1-888-657-5224

[www.decorativefilm.com](http://www.decorativefilm.com)